



# Glendowie College

## Attendance Management Plan Summary

**Whānau** (We are family)  
**Hiranga** (We strive for excellence)  
**Manaaki** (We encourage mana through respect and caring)  
**Kaha** (We stay strong)

**Vision:** Support students to have more regular attendance at Glendowie College, in order to improve student achievement and student welfare.

Shared Approaches to Teaching

Mātauranga Māori & Te Tiriti o Waitangi

Our school target is:  
**80%**  
 Regular attendance\* averaged throughout year 2026.

We're currently at:  
**71%**  
 Regular attendance averaged throughout 2025.

\*Target is to also increase regular attendance by 5% each term, from the previous year.

### Purpose of AMP (Attendance Management Plan)

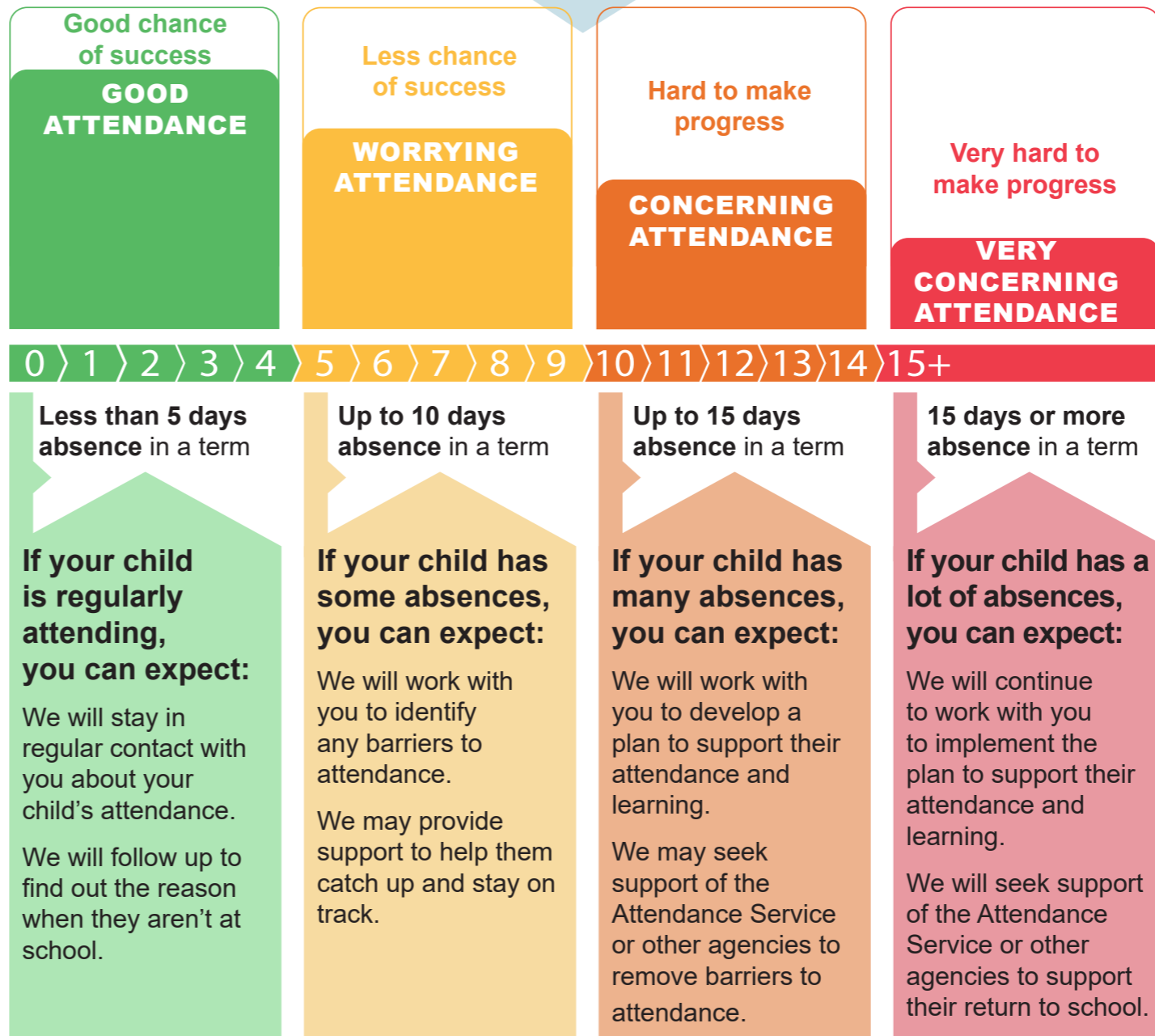
- To make our attendance expectations clear to students, parents and staff.
- To improve student achievement.
- To improve student welfare and sense of belonging.

### Monitoring

- The AMP will provide clear processes to follow up on all absences whether they are justified or not.
- Staff responsibilities are clearly stated across each STAR level.

\*"Regular attendance" means attending more than 90% of a term, or 9 days in a fortnight  
 Summary of our Attendance Management Plan template V1.0  
 Updated 12 June 2025

Our school uses the Stepped Attendance Response (STAR) to guide when and how we respond to absences.



Positive/Optimal Learning Environment

Ākonga & Staff Wellbeing